

# MONTHLY MEMBERSHIP PROGRESS REPORT

LOCATION INDIANA

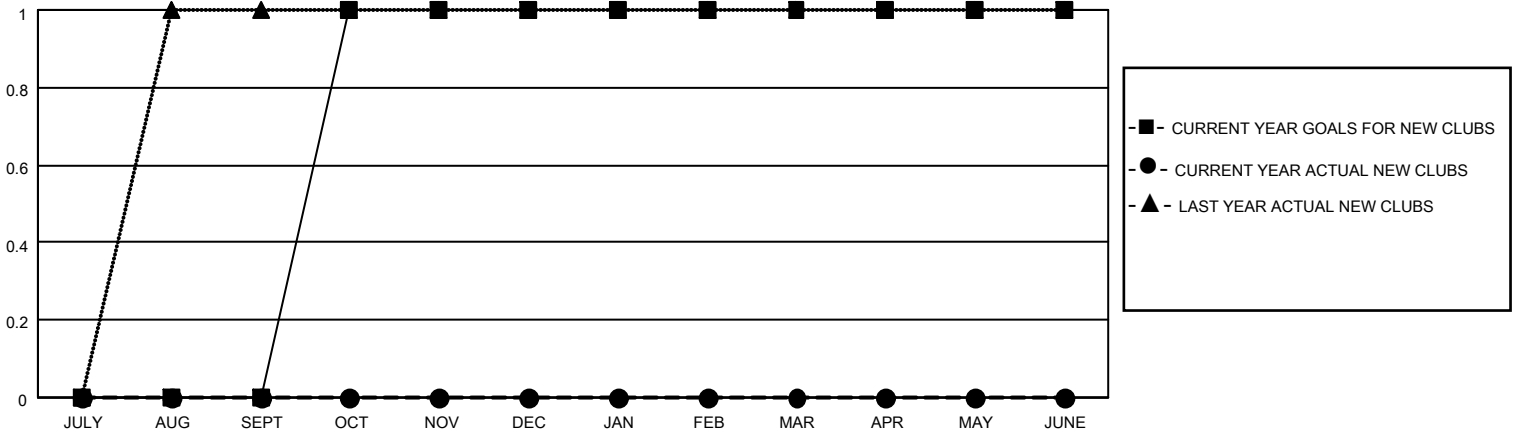
District 25 E

Results as of: 6/30/2022

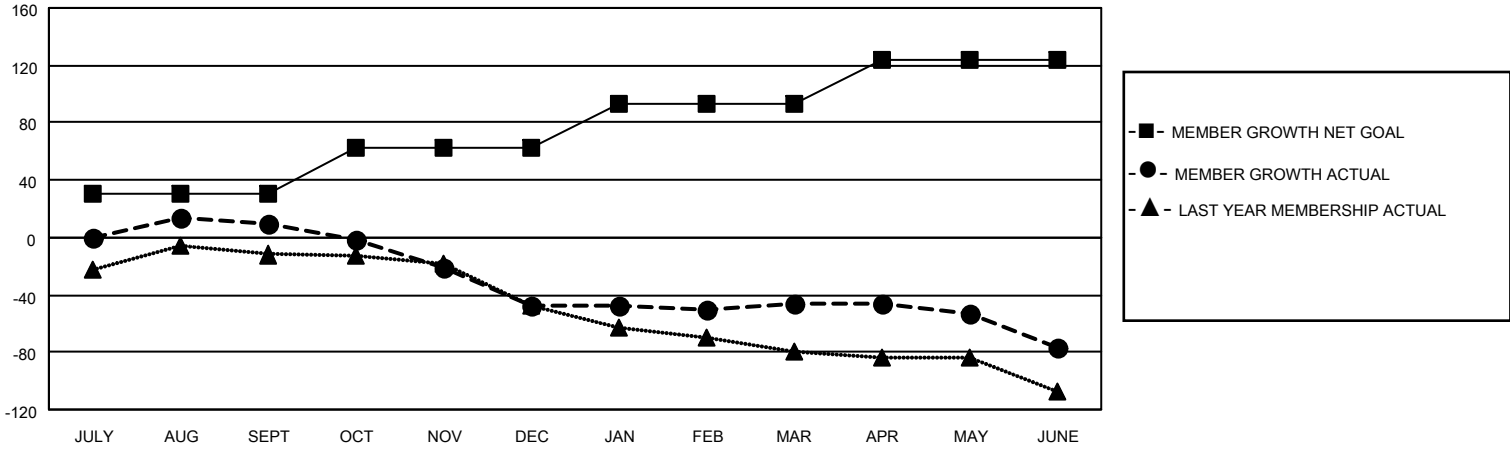
Clubs			
RESULTS FOR 2021-2022			
QUARTER	NEW CLUB GOAL	NEW CLUBS	DROPPED CLUBS
JULY/AUG/SEPT	0	0	0
OCT/NOV/DEC	1	0	1
JAN/FEB/MAR	0	0	1
APR/MAY/JUNE	0	0	1

Members			
RESULTS FOR 2021-2022			
QUARTER	MEMBER GROWTH NET GOAL	MEMBER GROWTH ACTUAL	DROPPED MEMBERS ACTUAL (including transfers)
JULY/AUG/SEPT	31	37	25
OCT/NOV/DEC	31	17	74
JAN/FEB/MAR	31	41	37
APR/MAY/JUNE	31	32	60

**GOALS AND ACTUAL NEW CLUBS CUMULATIVE**



**GOALS AND ACTUAL MEMBERS CUMULATIVE**



**DROPPED CLUBS: 3**

**36 CLUBS OF 56 ADDED 1 OR MORE NEW MEMBERS**

**GENDER DISTRIBUTION**

MALE	771 (62.79%)
FEMALE	457 (37.21%)
NON BINARY	0 (0.00%)
PREFER NOT TO ANSWER	0 (0.00%)

**DROPPED MEMBERS**

DECEASED	42
CLUB CANCELLED	26
OTHER	128
<b>TOTAL</b>	<b>196</b>

[CLICK HERE FOR CUMULATIVE MEMBERSHIP DATA](#)

TOTAL FAMILY UNIT MEMBERS	471
FAMILY MEMBERS PAYING HALF DUES	242